



THE
NEHEMIAH
COMPANY

PHASE ONE

KARIS MASTER PLANNED COMMUNITY

Crowley ISD School Board

Project Updates 02/25/2021



THE
NEHEMIAH
COMPANY

PROJECT CONTACTS

JOHN JORDAN

Senior Project Manager
(540) 845-2111
jjordan@tncdev.com

RACHEL COWARD

Assistant Project Manager
(512) 954-2148
rcoward@tncdev.com



TABLE OF CONTENTS

01

Vision Statement

02

A Community Rooted In Education

03

Phase One

04

School Site

05

Open Space Diagram

06

Entries and Streetscapes

07

Signature Parks

08

Pocket Parks

09

Status of Project

10

School Ready Timeline

KARIS

Vision Statement

The Karis Community embraces the characteristics of beauty, nature and creativity through honest and modern design. Residents will enjoy the simple beauty of the community, appreciate the preserved nature, and celebrate creative approaches to living!

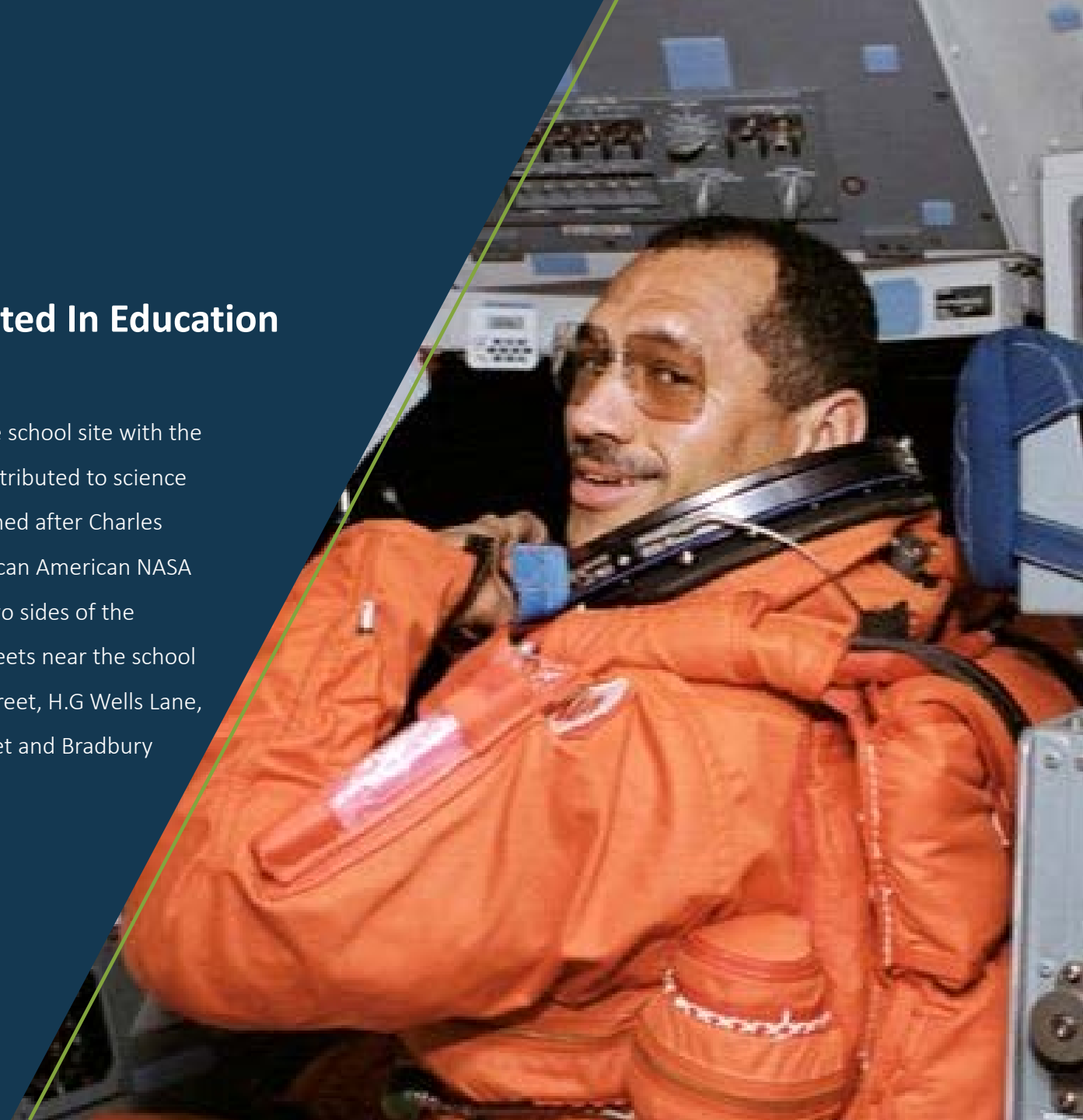
STREET NAMES

A Community Rooted In Education

We believed in surrounding the school site with the names of people who have contributed to science and literature. Bolden Ave, named after Charles “Panther” Bolden, the first African American NASA Administrator, will run along two sides of the school. Also, we named the streets near the school after classic authors: Travers Street, H.G Wells Lane, Jules Verne Drive, Dickens Street and Bradbury Place.



THE
NEHEMIAH
COMPANY

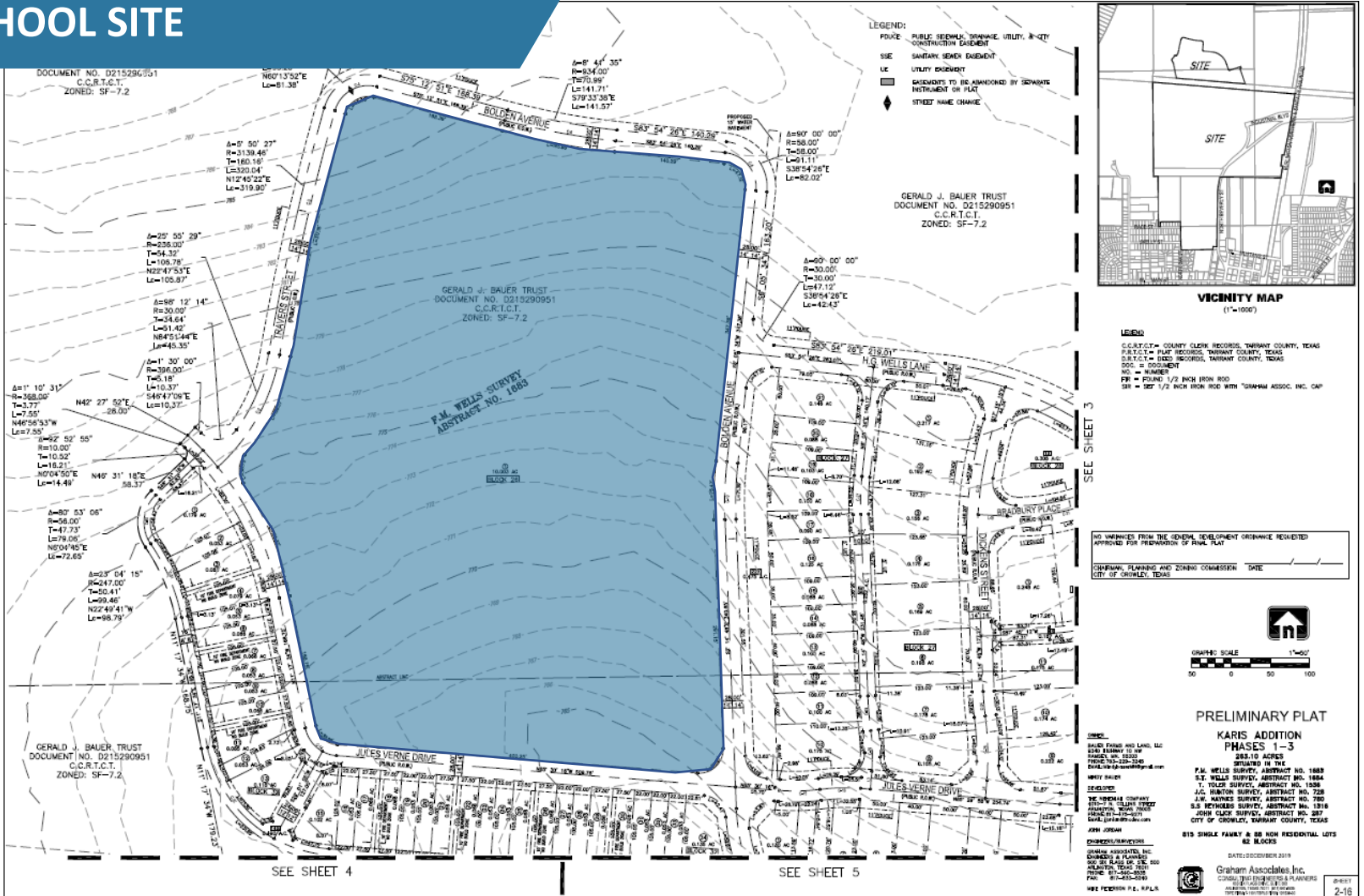


School site will now be a part of Phase One!

Phase One



SCHOOL SITE



Karis - derived from a Greek word meaning "grace, kindness, and life." Karis was a member of the Three Graces in Greek mythology. Goddesses of beauty, nature, and human creativity.

OPEN SPACE DIAGRAM



- the three graces in open space
 - northern signature park
nature
 - southern signature park
beauty
 - northern pocket park
creative

- additional spaces
 - entries and streetscape
 - pocket park/mews
 - nature preserve
 - trail head
 - 10' trail
 - 8' trail
 - 5' walk
 - amenity center

A beautiful approach – Industrial Blvd. will be renamed Karis Blvd. and the main entry will be landscaped. A roundabout with entry monumentation featuring graceful arches and simple materials.

ENTRIES & STREETSCAPES



Signature Parks



NORTHERN SIGNATURE PARK



SOUTHERN SIGNATURE PARK

Pocket Parks



Status of Project

- Karis is currently planned for 2,070 single family residential units developed in eight phases with over 90 acres of parks and open space, including two amenity areas.
- The first phase consist of 327 residential lots, a 10-acre school site, and all infrastructure to service the phase.
- IN PROCESS: Closing on Phase 1 Land – 1st Quarter 2021
- NEXT STEPS: Platting and Construction Documents

School Ready Timeline

- Ph 1 Groundbreaking – 2nd Quarter 2021
- First Homes Completed – 3rd Quarter 2022
- Complete School Sitework – 3rd Quarter 2022
- Reach 200 Homes Certificate of Occupancy – 3rd Quarter 2023